



# Storm+

## *PC/ND/AS Dripper for Sub Surface Irrigation*

Developed for precision agricultural and sub surface landscape applications, the Storm+ emitter is designed for high performance in varied slope applications and extra-long laterals.

## Advantages and Benefits

### Pressure Compensating

Self-regulation ensures the same flow rate over a range of pressures, making it the ideal choice for sloped conditions or extra-long laterals in agricultural applications.

### High Performance

Longer pipe runs with <math><0.05</math> emitting exponent giving a constant flow over a large pressure range

### Ease of Use

Not sensitive to varied field conditions, such as slopes and valleys simplifying system design.

### Self-Cleaning and Clog-Resistant

A self-cleaning silicone diaphragm and large cross-section labyrinth ensure compensation is not interrupted by suspended solids in the water.

### Optional Check Valve

Storm+ is available with an anti-siphon (AS) option as well as a non-drain (ND) option. Compensation begins at 0.7 bar (10 psi) and closing pressure is 0.2 bar (3 psi)

### Built-in Quality and Durability

Constructed with 100% premium virgin polyethylene and additives for resistance to UV degradation and damage caused from commonly used chemicals and fertilizers.

**16mm Diameter** available in 2 and 4 LPH

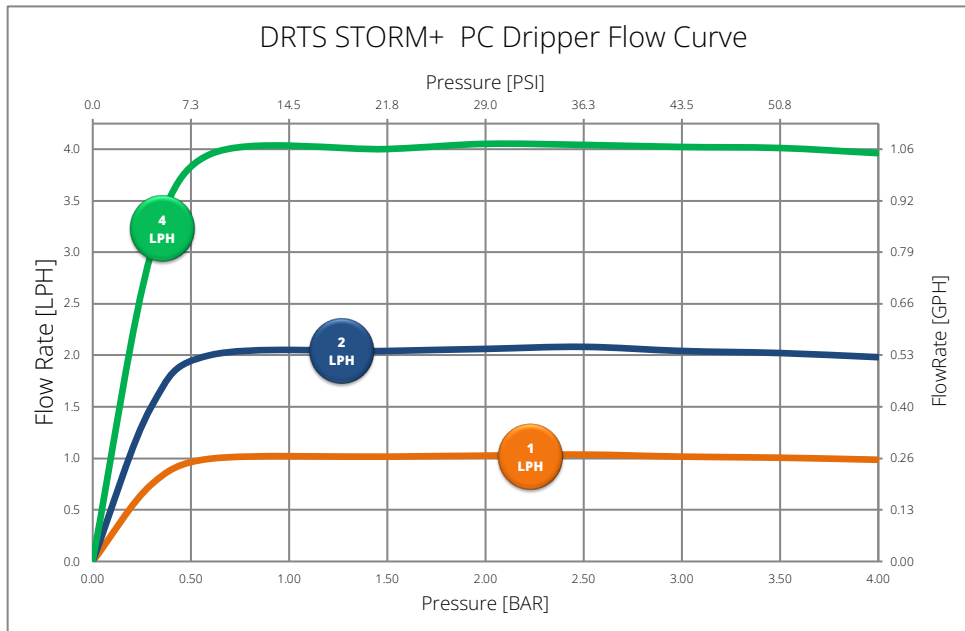
**18mm Diameter** available in 2 and 4 LPH

**20mm Diameter** available in 2 and 4 LPH

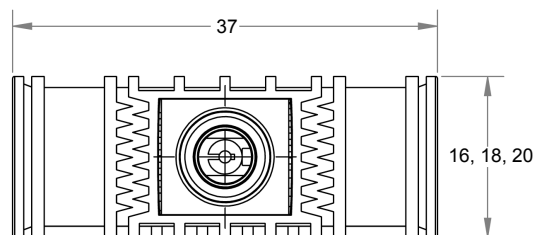
# Storm+

## PC/ND/AS Dripper for Sub Surface Irrigation

Developed for precision ag and landscape applications, the Storm+ emitter is designed for high performance even in sloped applications and extra-long laterals.



Flow Rate [L/h]	Diameter [mm]	Sealing	Exponent	Pressure Range
2.0	16, 18, 20	0.2 Bar	$\leq 0.05$	0.7 - 4.0 bar
4.0	16, 18, 20	0.2 Bar	$\leq 0.05$	0.7 - 4.0 bar



\*Technical data is to be used as a guide only. Actual results may vary depending on manufactured pipe characteristics.



📞 +90-532-556-1667

✉️ info@drts-corp.com

🌐 www.drts.com